

EC Backward Centrifugal Fan with Metal Impeller

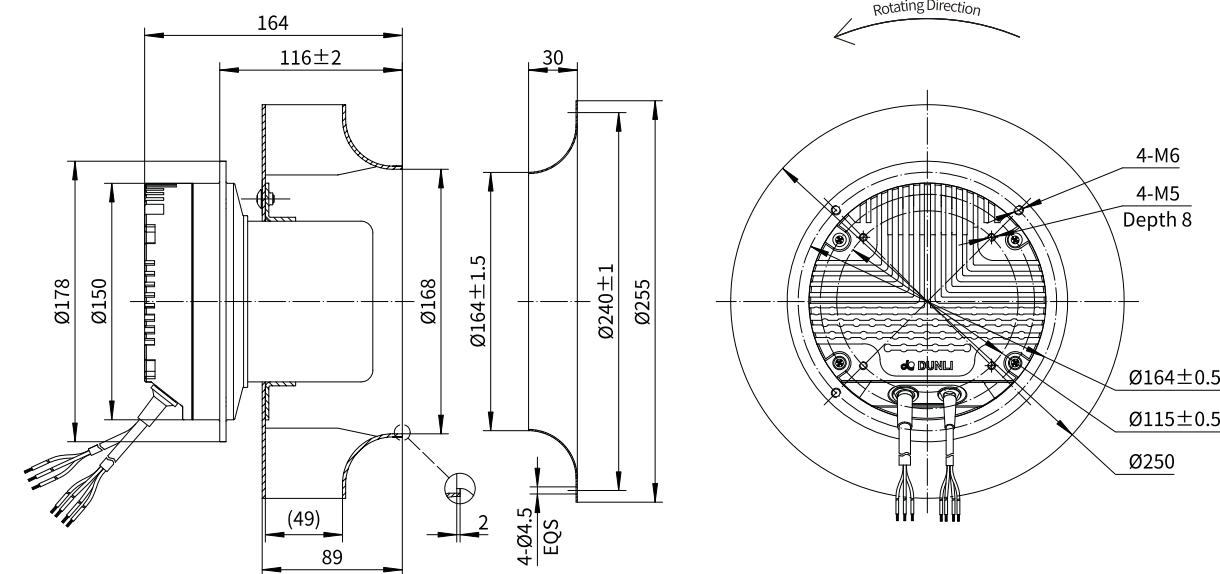
Erp2015
EXCEEDS THE NORM

Motorized Backward Curved Impeller

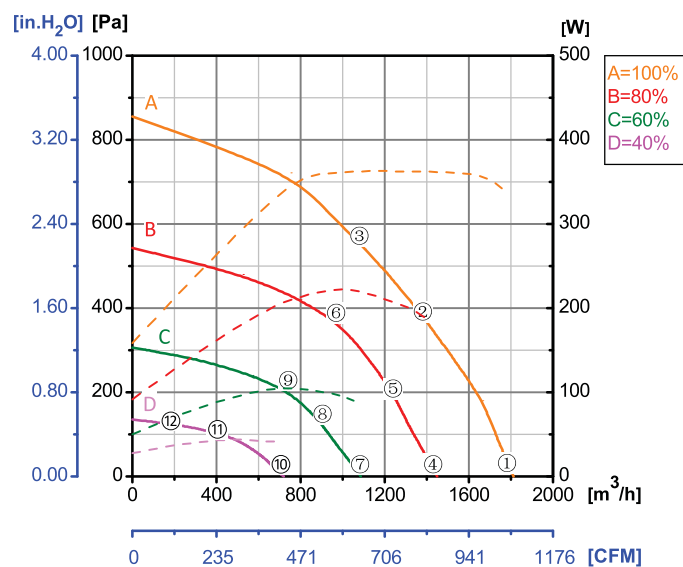


Φ 250-H

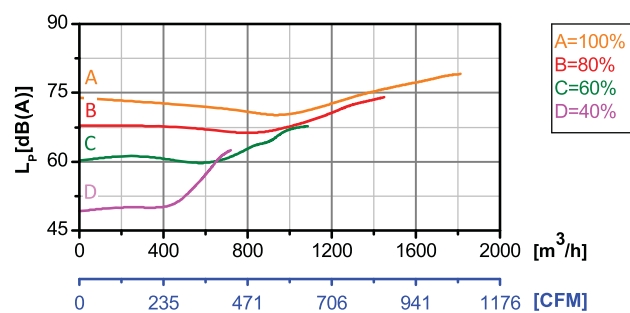
Rotor Material: Carbon steel
 Impeller Material: Aluminum alloy sheet
 Ingress Protection: IP54
 Insulation Class: F
 Bearing Type: Maintenance free ball bearing



Performance Curves



Test Point	Speed	Input Power
	rpm	W
1	3283	328
2	3172	362
3	3124	364
4	2628	179
5	2630	205
6	2631	223
7	1970	87
8	1974	100
9	1974	105
10	1313	39
11	1314	43
12	1314	39



Erp2015 Data:
 Efficiency η_{statA}=51.2%
 Efficiency grade N_{actual}=66.3, N_{target}=62
 Test report No. : L-20210302-005-046

Model No.	Voltage	Frequency	Speed	Input Power	Current	Working Temp.	Approvals
	VAC	Hz	RPM	W	A	Min/Max (°C)	
EC102-B250-030	1~220/230	50/60	3300	350	1.60	-20/+60	CCC,CE